



AUSTRIAN DATA CUBE

An EODC service for the
Austrian EO user community



Pre-processed
Sentinel-1 & 2 data



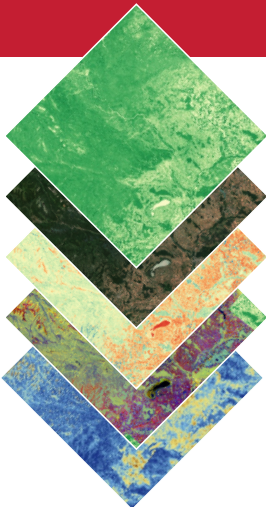
Added Value and
Analysis Ready Data



Interactive data
analysis interfaces



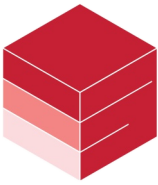
austriandatacube.eodc.eu



The **ACube** delivers a system making **analysis ready Copernicus data** available to the broad public.

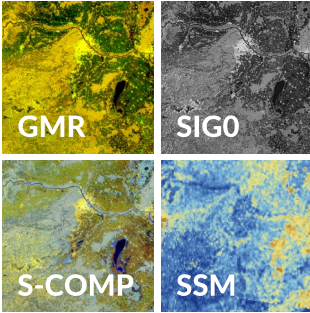
Data are provided in a gridded multi-dimensional database capable of providing time-series of highly standardized and harmonized **radiometrically and geometrically corrected** satellite data.

The **cloud-based storage and processing** environment allows to directly download ready-to-use data for specific regions of interest, without performing the time-consuming pre-processing steps.



AUSTRIAN
DATA
CUBE

DATA OFFER & ACCESS



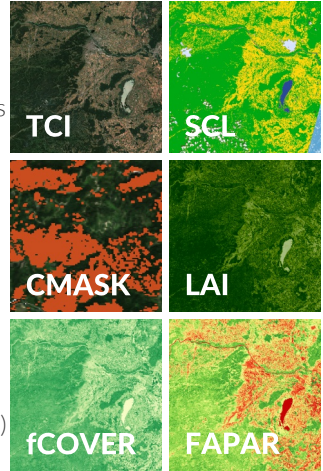
Sentinel-1

Sigma Nought (SIGO) backscatter returned from a unit area on the ground at 10 m pixel sampling
Gamma Nought (GMR) radiometric terrain flattened backscatter returned from a unit area perpendicular to the looking direction
Surface Soil Moisture (SSM) relative soil moisture content of the upper soil layer provided at 500m spatial resolution
Seasonal RGB Composites (S-COMP) show the characteristics of the sensor to identify different types of land cover



Sentinel-2

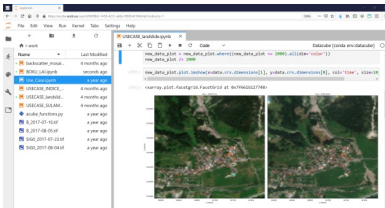
Atmospherically corrected Sentinel-2 bands, single images and monthly means
True Colour Image (TCI) obtained as combination of Sentinel-2 RGB bands
Scene Classification Layer (SCL) land classification at 10 m pixel sampling
Cloud Mask (CMASK) binary map of cloud and buffered cloud shadows
Leaf Area Index (LAI) linking to crop growth, water and energy balance
Fraction of Photosynthetically Active Radiation (FAPAR)
Fraction of Vegetation Cover (fCOVER)
 ground covered by green vegetation



JupyterLab:
acube.eodc.eu

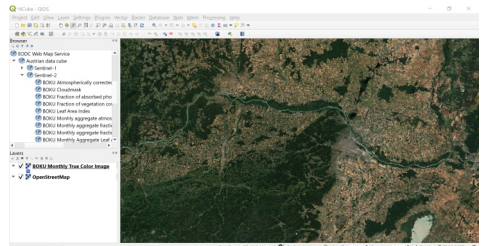
JupyterLab

Interactive web-based development environment accessible from the browser for data access, analysis and visualisation with **Jupyter Notebooks**



OGC Web Services

Web Map Service (**WMS**), Web Coverage Service (**WCS**) for data access from your GIS application



Version 1.1/2020